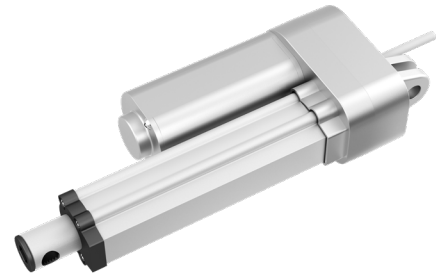


JC35W10 Linear Actuator

Application field - Medical Line

Preferably in medical bed, nursing bed, patient lifter, comfort bed, TV lifter, engineering machinery and other fields.

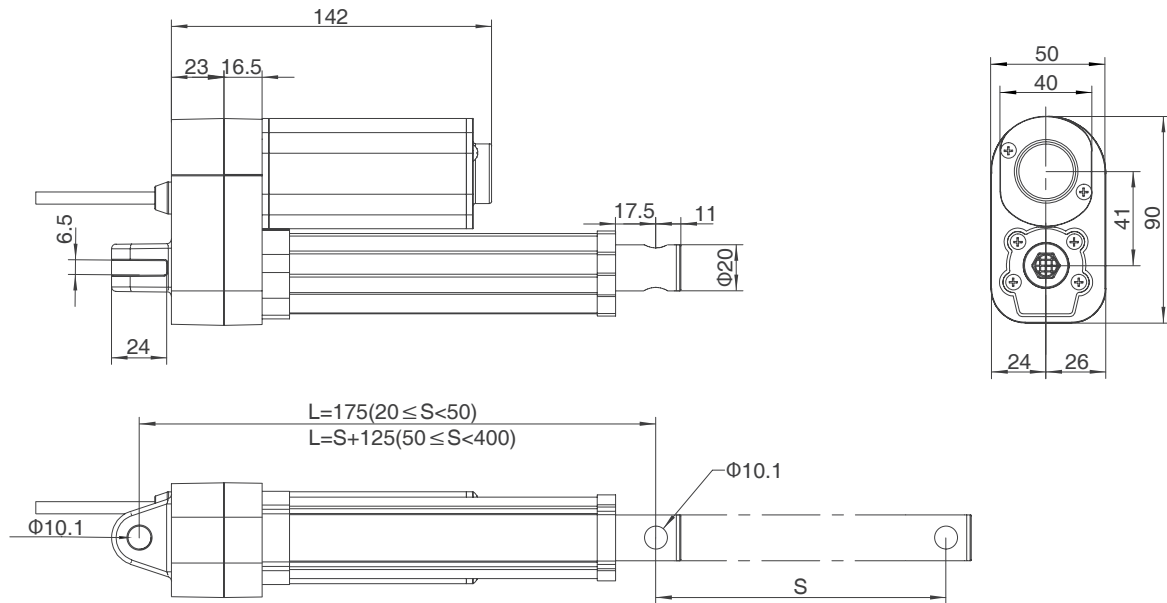
JC35W10 is a kind of actuator with low noise, compact installation size, high speed and high IP grade(IPX6). It has following models: JC35W10-3000N; JC35W10-2000N; JC35W10-1000N.



General Features

Load in push (N):	3000 2000 1000
Load in pull (N):	3000 2000 1000
Motor rated voltage Input (VDC):	24
Stroke length:	3000N: 50 ~ 250mm 2000N: 50 ~ 400mm 1000N: 50 ~ 400mm
Installation dimensions (mm):	1000N / 2000N: L=175 (S≤50) L=S+125 (50<S≤400) 3000N: L=175 (S≤50) L=S+125 (50<S≤250)
Colour:	Silver grey
Limit switch:	Built-in (electrical)
Weight:	About 1.7kg (different stroke length and installation dimensions with different weight)
Noise level:	≤48dB (environmental noise ≤40dB)
Static bending moment:	Lateral load is not allowed
Duty cycle:	10%, max. 2min. continuous use
Max IP grade:	IPX6
Options:	Hall sensor, Only push
Standards:	EN 60335-1:2012+A11:2014+A13:2017+A1:2019+A14:2019+A2:2019 ANSI/AAMI ES60601-1:2005/(R)2012 and A1:2012, C1:2009/(R)2012 and A2:2010/(R)201

Dimension Drawing

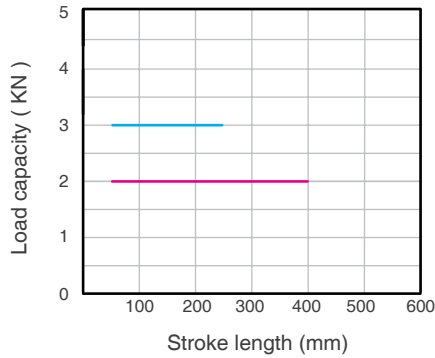


Technical parameters

Power voltage (VDC)	Spindle pitch (mm)	Max.Load capacity (N)	Self locking (N)	Speed no load (mm/s)	Speed full load (mm/s)	Current full load (A)
12	4	1000	1000	8	5.5	5
12	7.5	1000	1000	13	8.5	5
12	10	1000	600	20	13.5	5
24	4	3000	3000	8	5.5	5
24	7.5	2000	1500	14	10	5
24	10	1000	600	20	13.5	5
29	4	3000	3000	9.5	7.5	5
29	7.5	2000	1500	17.5	13	5
29	10	1000	600	23	16	5
36	4	3000	3000	13	9	5
36	7.5	2000	1500	20	16	5
36	10	1000	600	28.5	20.5	5
48	4	3000	3000	8.5	6	5
48	7.5	2000	1500	14	10	5
48	10	1000	600	21	14	5

Remark: the above data are typical values at 25 °C

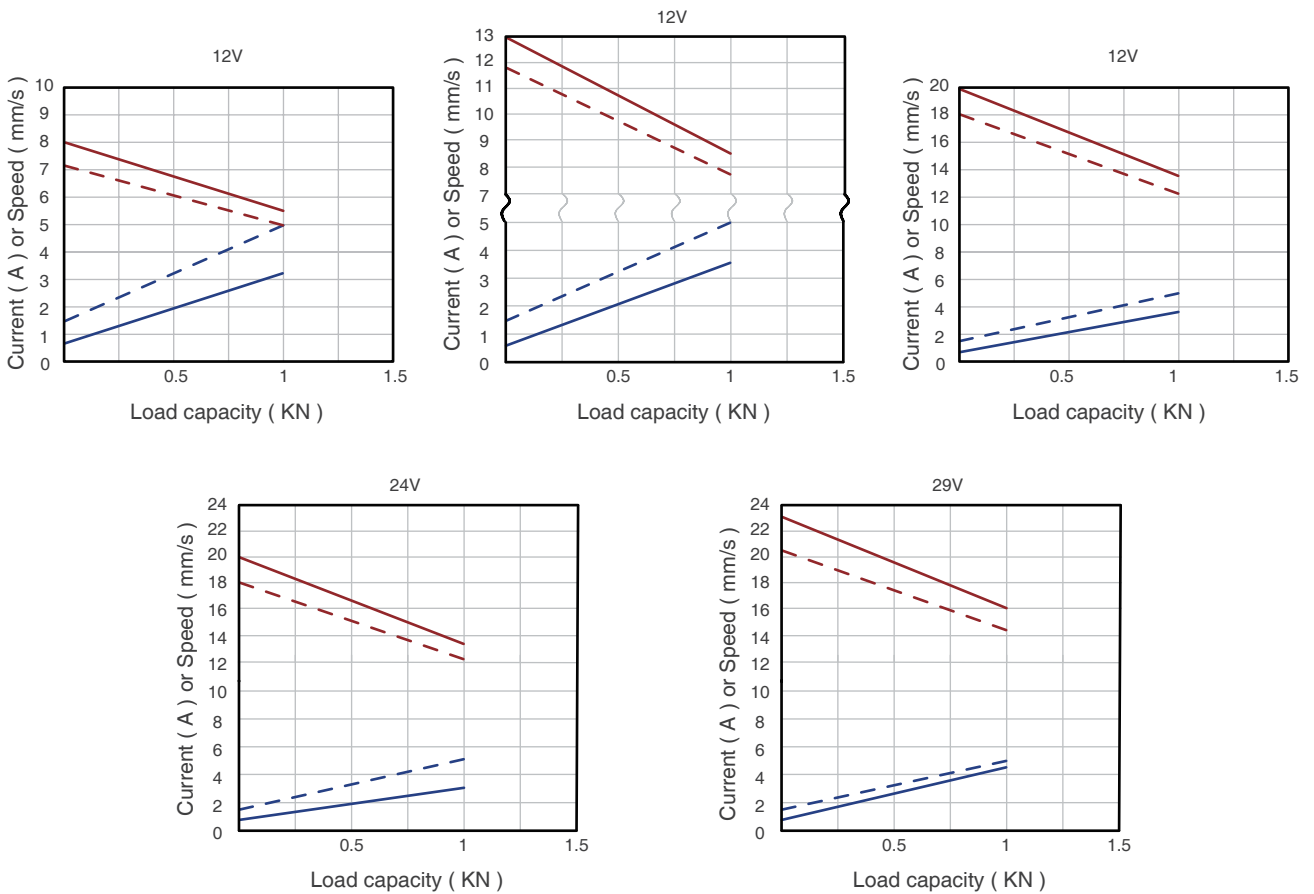
Stroke length versus load



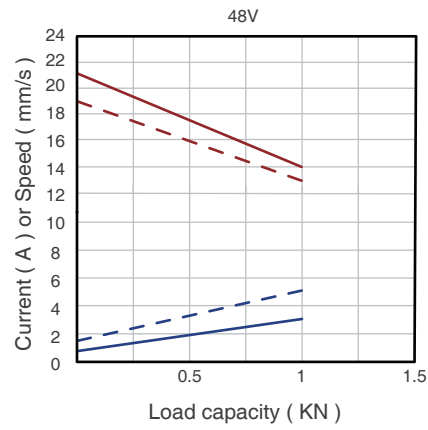
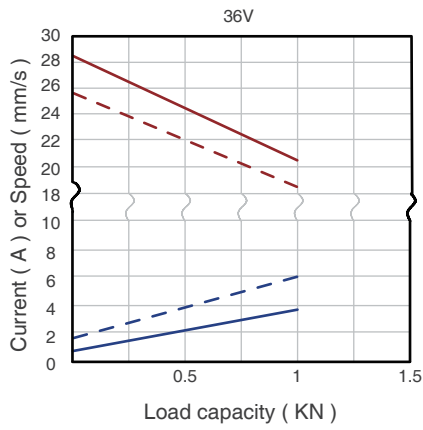
Characteristic

- Typical speed ————
- Min. speed - - - - -
- Typical current ————
- Max. current - - - - -

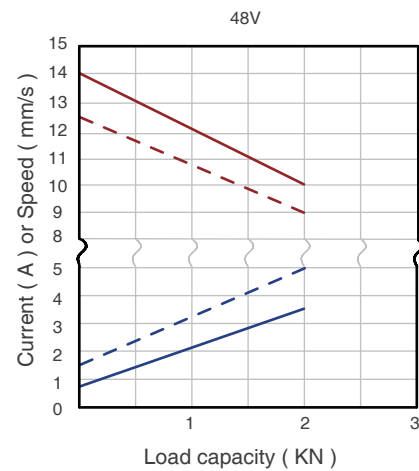
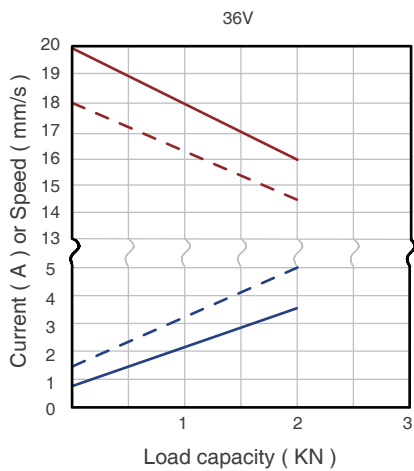
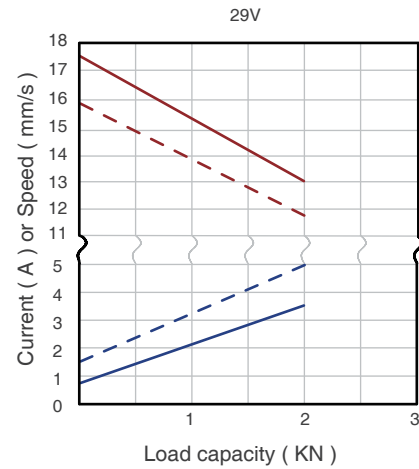
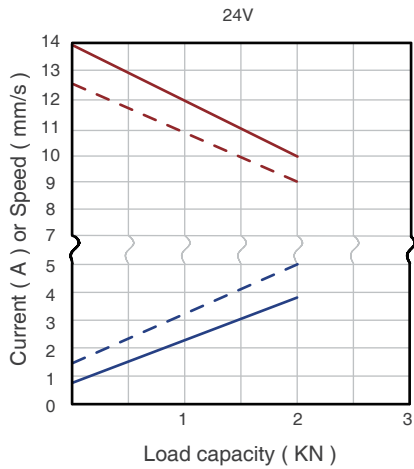
1000N



Typical speed ———
 Min. speed - - - -
 Typical current ———
 Max. current - - - -



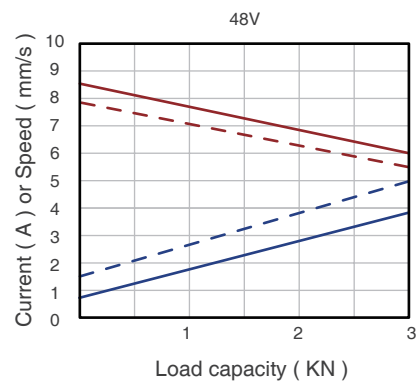
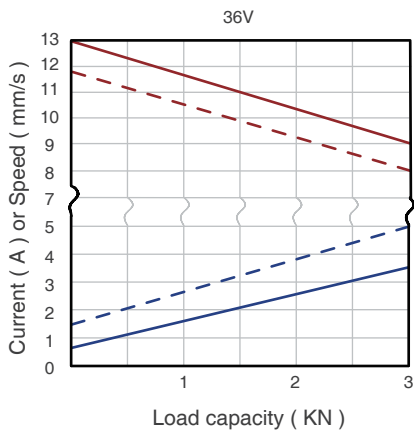
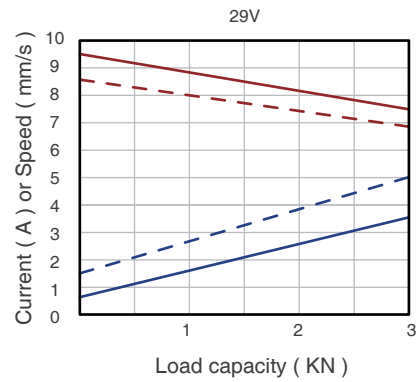
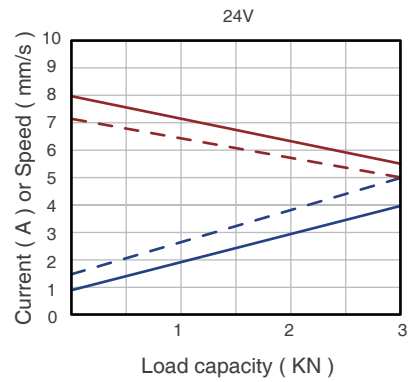
2000N





Typical speed ———
Min. speed - - - -
Typical current ———
Max. current - - - -

3000N



Ordering Key

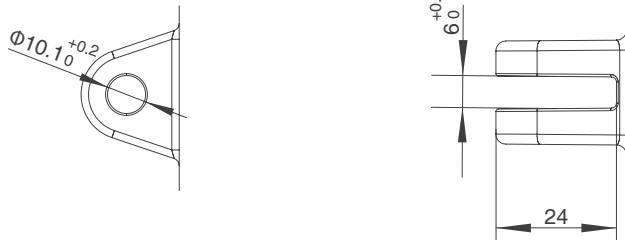
Take **JC35W10028D524300/420VGB35L710021D5** for example

Model	JC35W10	
Optional features	0	0 = Standard / Y = Hall sensor
Load in push	2	3 = 3000N / 2 = 2000N / 1 = 1000N
Speed at full load	8D5	5D5 = 5.5mm/s 8D5 = 8.5mm/s 13D5 = 13.5mm/s
Input voltage	24	12 = 12VDC / 24 = 24VDC
Stroke length/ Installation dimension	300/420	Stroke length = XXX Retracted length = XXX
Clevis directions	V	H = H direction / V = V direction
Color	G	G = Silver gray
End clevis specification	B35	B35 = End clevis number, Slot 6.5, Hole 10.1
End clevis material	L	L = Aluminum alloy
Top clevis specification	71	71 = W-type, hole diameter of top clevis 8.0 74 = W-type, hole diameter of top clevis 6.5
Brake specification	0	0 = No brake
Type of plug and cable	02	02 = 4 pin DIN plug and 2 pin straight cable 10 = 5 pin DIN plug and 6 pin straight cable 93 = 6 pin ET waterproof bending plug 6-pin straight cable
Cable length	1D5	1D5 = 1.5m / 2D0 = 2m

Ordering Details

Dimension drawing of clevis

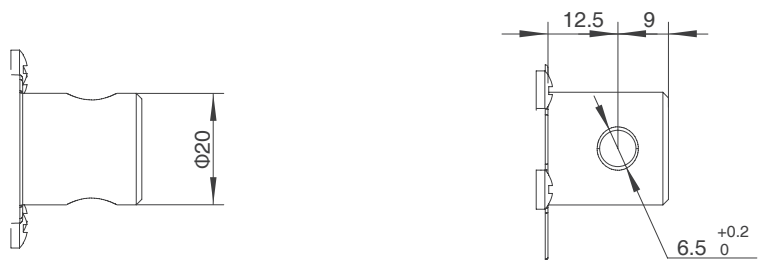
End clevis (new)



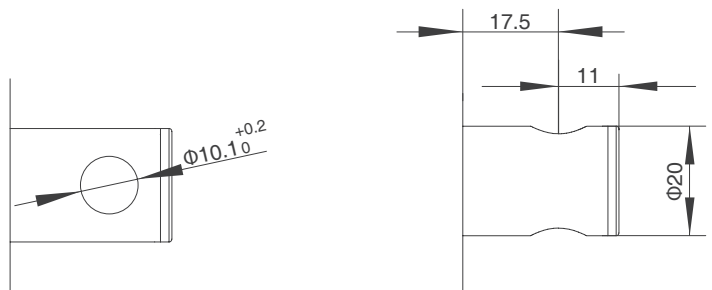
Top clevis: 71



Top clevis: 74



Top clevis (new)

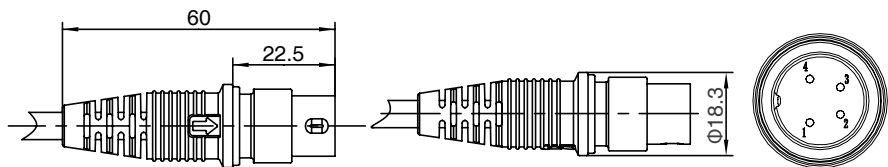


Motor wire

4-pin straight plug (standard)

Matching controller: JCB35Q/
JCB35T/ JCB35R/ JCB35R1/
JCB35S/ JCB35K2

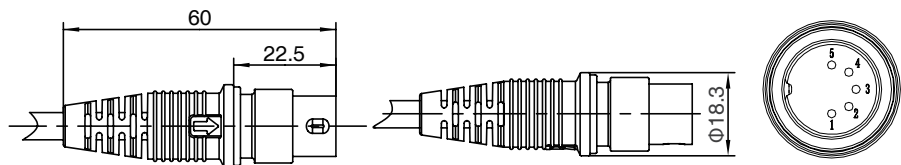
Pin	Color	Function
1	NC	Not connected
2	Brown	When positive voltage power on,actuator will go down
3	Blue	When positive voltage power on,actuator will go up
4	NC	Not connected
Outer ring	NC	Not connected



**5 pin DIN plug
(with Hall sensor)**

Matching controller: JCB35Q/
JCB35T/ JCB35R/ JCB35R1/
JCB35S/ JCB35K2

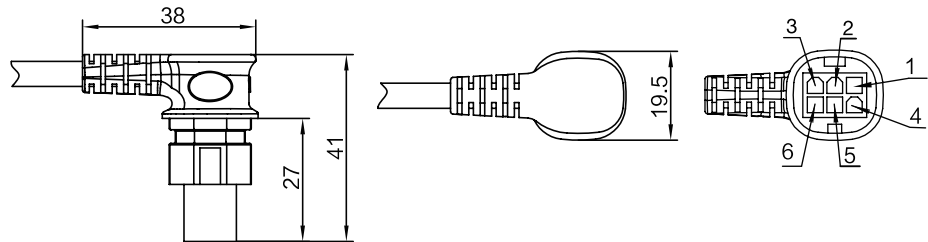
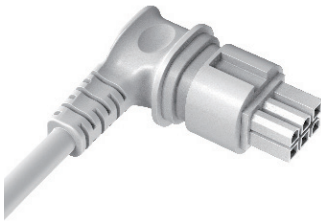
Pin	Color	Function
1	Red	5V
2	Brown	When positive voltage power on,actuator will go down
3	Black	GND
4	Blue	When positive voltage power on,actuator will go up
5	Yellow	Hall signal 1
Outer ring	Orange	Hall signal 2



6 Pin Mini-Fit elbow plug

Matching control box :JCB35T2/
JCB35T3/JCB35Q3/JCB35K3

Pin	Color	Function
1	Orange	When not on lower limit, link with red wire
2	Black	When not on upper limit, link with yellow wire
3	Red	When not on lower limit, link with orange wire
4	Brown	When positive voltage power on,actuator will go down
5	Blue	When positive voltage power on,actuator will go up
6	Yellow	When not on upper limit, link with black wire





Strictly abiding by medical safety certifications

Passed EMC tests. To ensure our products pass all kinds of tests domestic or abroad.



Communication protocol development

Aiming at different applications, develop more extensive functions for control system.



Professional customization

Powerful R&D strength, fully satisfy customers' needs. Development cycle is about 10 days, seizing more market opportunities



Intelligent Control of Bluetooth

Mobile phone as the remote, applying in home care. Market pioneer, Jiecang provides better choices



Wireless Communication

Controllers adopt high-frequency wireless system. It can avoid interference mixing with signal receivers, assisting in remote control over medical equipment.



Latest Weighing System

Designed for physiotherapy beds and medical care beds. Cantilever carrying weighing sensor, it is applicable to different bedsteads dispensing with any adjustment



Notes for mounting and usage can be found in the corresponding mounting manual