

JC35L28 Linear Actuator

Application field - Medical Line

Preferably in medical beds; operation bed; nursing bed; patient lift and etc.

JC35L28 is a actuator with small-size, fast speed, high efficiency, low noise, high load, multiple functions could be used in multiple variety applications.It has following specifications: JC35L28-10000N (push); JC35L28-8000N (push).The features of JC35L28 is big load capacity, fast speed, Max. IP grade could be IPX6 and low noise.

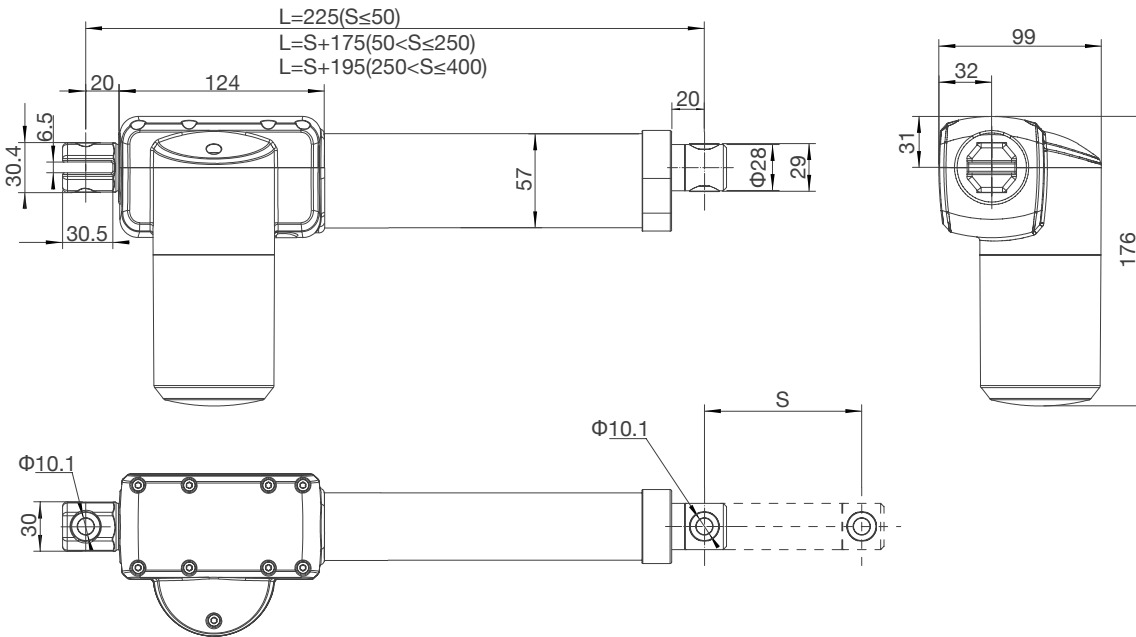


General Features

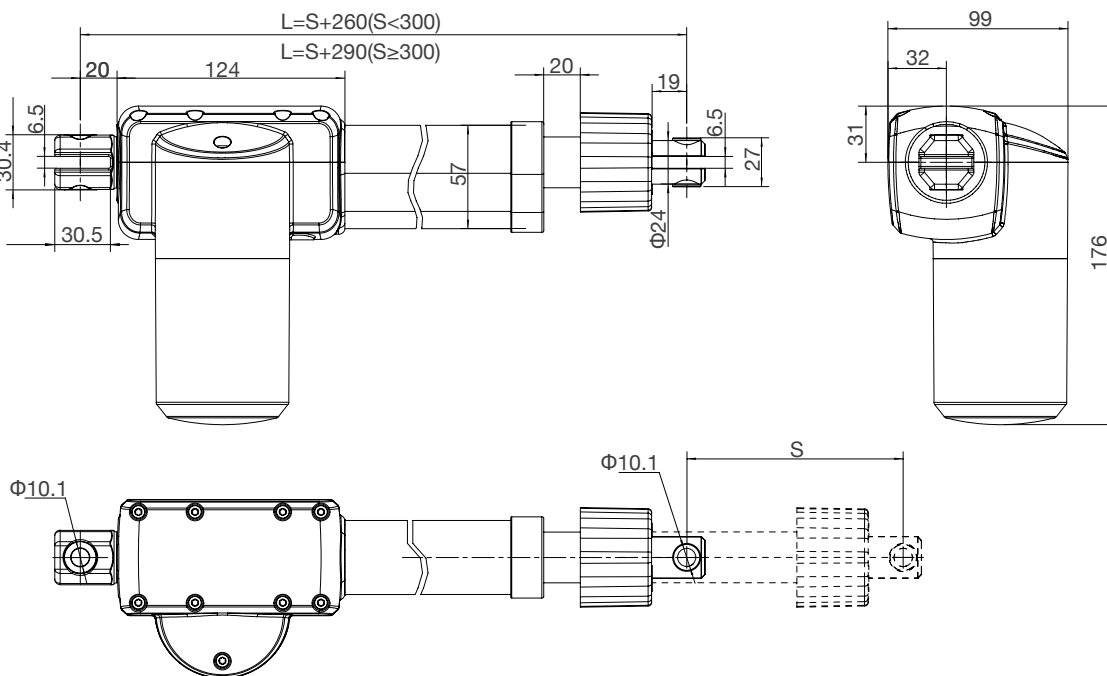
Load in push (N):	10000, 8000
Motor rated voltage Input (VDC):	29
Stroke length:	10000N: 50-400mm (in steps of 4mm) 8000N: 50-400mm (in steps of 4mm)
Installation dimensions (mm):	L=225 (S≤50, standard); L=S+175 (50<S≤250,standard) L=S+195 (250<S≤400, standard); L=310 (S≤50, manual operation) L=S+260 (50<S<300, manual operation); L=S+290 (300≤S≤400, manual operation)
Colour:	Grey (RAL 7035)
Limit Switch:	Built-in (electrical)
Noise level:	≤48dB (environmental noise≤40dB)
Quickly release:	Standard
Weight:	About 3kg (different stroke length and installation dimensions with different weight)
Static bending load:	No bending load
Duty cycle:	10%, max. 2min. continuous use
Max IP grade:	IPX6
Options:	Safety nut, Hall sensor, Manual operation
Standards:	IEC60601-1: 2012 EN 60601-1:2006+A12:2014 ANSI/AAMI ES60601-1:2005/(R)2012 and A1:2012, C1:2009/(R)2012 and A2:2010/(R)2012

Dimension Drawing

Standard version, top clevis F81, end clevis B40



Manual operation version, top clevis F60, end clevis B40

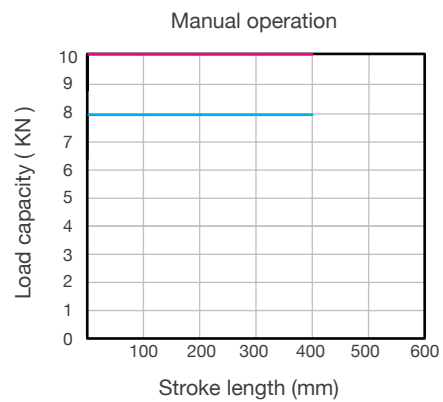
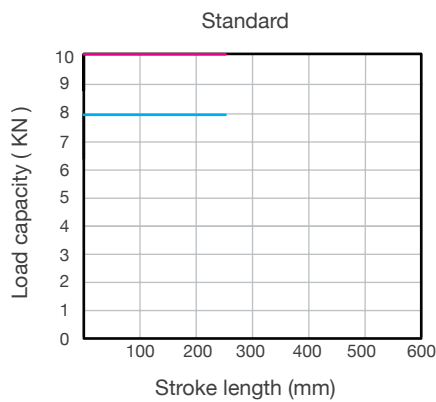


Technical parameters

Power voltage (VDC)	Spindle pitch (mm)	Max.Load capacity (N)	Self locking (N)	Speed no load (mm/s)	Speed full load (mm/s)	Current full load (A)
24	6	10000	10000	6	4	7
24	8	8000	8000	8	5.5	6
29	6	10000	10000	7.5	5.5	7.5
29	8	8000	8000	10	7.3	7
36	6	10000	10000	10	7	7
36	8	8000	8000	13	9	4

Remark: the above data are typical values at 25 °C

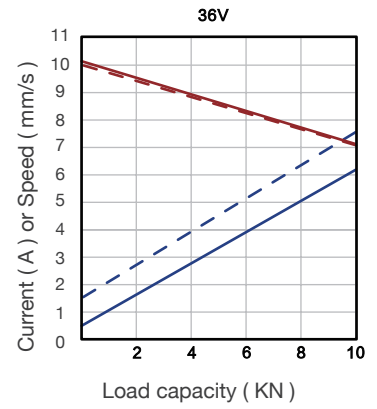
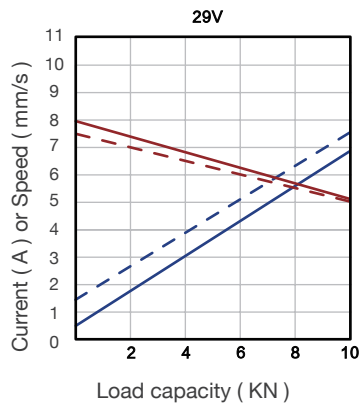
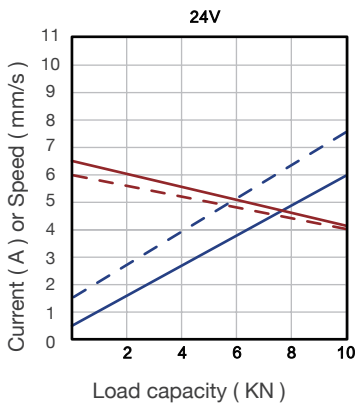
Stroke length versus load



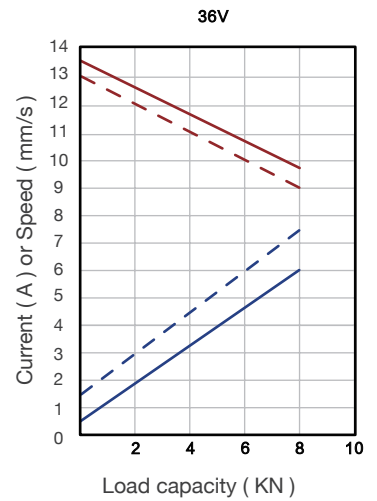
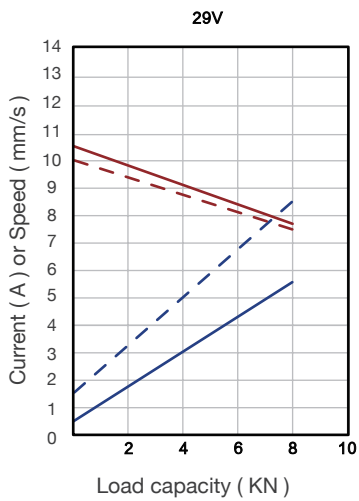
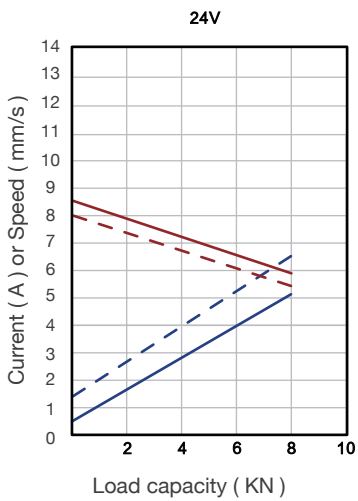
Characteristic

Typical speed ————
 Min. speed - - - - -
 Typical current ————
 Max. current - - - - -

10000N



8000N



Ordering Key

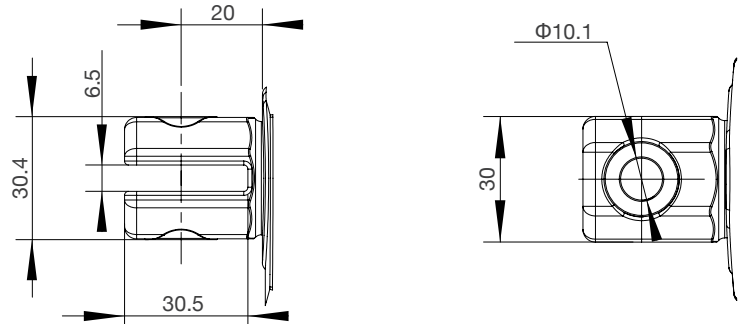
Take **JC35L280105D29100/275HG40L812022D0** for example

Model	JC35L28	
Optional features	0	0 = Standard / P = Only push / S = Safety nut / Y = Hall sensor X = manual operation + only push no pull + safety nut PY = Only push + Hall sensor SY = Safety nut + Hall sensor N = Only push no pull + Safety nut + Hall sensor
Load in push	10	10 = 10000N 8 = 8000N
Speed at full load	5D5	5D5 = 5.5mm/s
Input voltage	29	29 = 29VDC
Stroke length/ Installation dimension	100/275	Stroke length = XXX Retracted length = XXX
Clevis directions	H	H = H direction / V = V direction
Color	G	G = Grey (RAL7035)
End clevis specification	40	40 = B40 Slot 6.5mm, depth of the slot is 30.5mm; hole diameter is 14.2mm, JC35L28 end clevis
End clevis material	L	L = Aluminum alloy
Top clevis specification	81	81=F81, JC35L28 top clevis, hole diameter 14.2mm, not slotted, the distance from the center of the hole to the undercut groove is 11.5mm, the total length is 34mm 60=F60, JC35SX handspin assembly, plus head cover with aperture 10.1, white
Brake specification	2	2 = Right brake
Type of plug and cable	02	02 = 4 pin DIN plug and 2 pin straight cable 10 = 5 pin DIN plug and 6 pin straight cable 93 = 6 pin ET waterproof bending plug 6pin straight cable
Cable length	2D0	2D0 = 2m / 0D5 = 0.5m

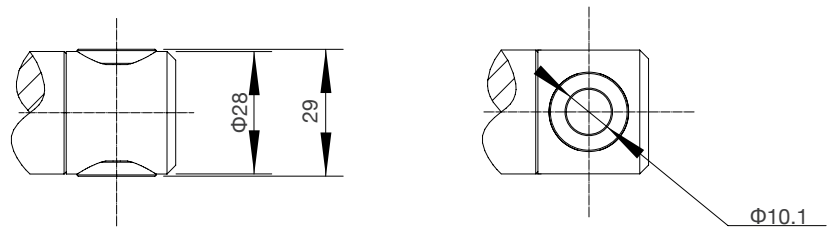
Ordering Details

Dimension drawing of clevis

End clevis: B40



Top clevis: F81

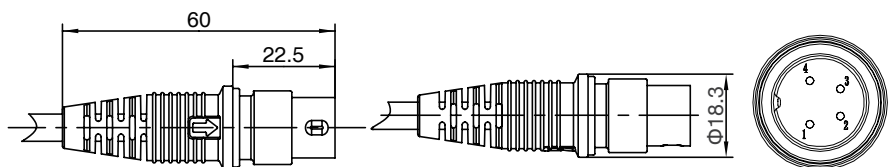


Motor wire

4-pin straight plug (standard)

Matching controller: JCB35Q/
JCB35T/ JCB35R/ JCB35R1/
JCB35S/ JCB35K2

Pin	Color	Function
1	NC	Not connected
2	Brown	When positive voltage power on, actuator will go down
3	Blue	When positive voltage power on, actuator will go up
4	NC	Not connected
Outer ring	NC	Not connected

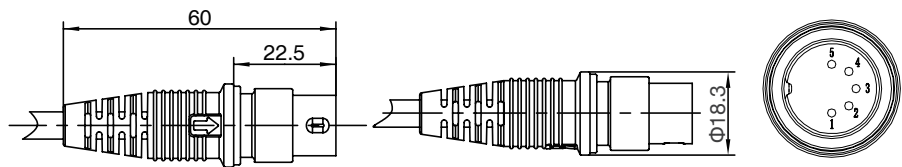


5 pin DIN plug (with Hall sensor)

Matching controller: JCB35Q/
JCB35T/ JCB35R/ JCB35R1/
JCB35S/ JCB35K2

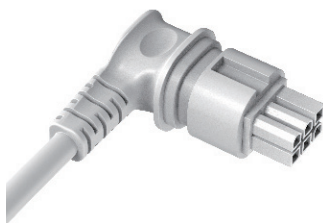


Pin	Color	Function
1	Red	5V
2	Brown	When positive voltage power on, actuator will go down
3	Black	GND
4	Blue	When positive voltage power on, actuator will go up
5	Yellow	Hall signal 1
Outer ring	Orange	Hall signal 2

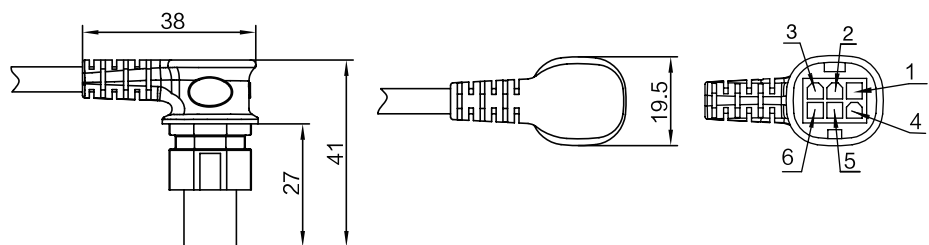


6 Pin Mini-Fit elbow plug

Matching control box :JCB35T2/
JCB35T3/JCB35Q3/JCB35K3



Pin	Color	Function
1	Orange	When not on lower limit, link with red wire
2	Black	When not on upper limit, link with yellow wire
3	Red	When not on lower limit, link with orange wire
4	Brown	When positive voltage power on, actuator will go down
5	Blue	When positive voltage power on, actuator will go up
6	Yellow	When not on upper limit, link with black wire





Strictly abiding by medical safety certifications

Passed EMC tests. To ensure our products pass all kinds of tests domestic or abroad.



Communication protocol development

Aiming at different applications, develop more extensive functions for control system.



Professional customization

Powerful R&D strength, fully satisfy customers' needs. Development cycle is about 10 days, seizing more market opportunities



Intelligent Control of Bluetooth

Mobile phone as the remote, applying in home care. Market pioneer, Jiecang provides better choices



Wireless Communication

Controllers adopt high-frequency wireless system. It can avoid interference mixing with signal receivers, assisting in remote control over medical equipment.



Latest Weighing System

Designed for physiotherapy beds and medical care beds. Cantilever carrying weighing sensor, it is applicable to different bedsteads dispensing with any adjustment



Notes for mounting and usage can be found in the corresponding mounting manual